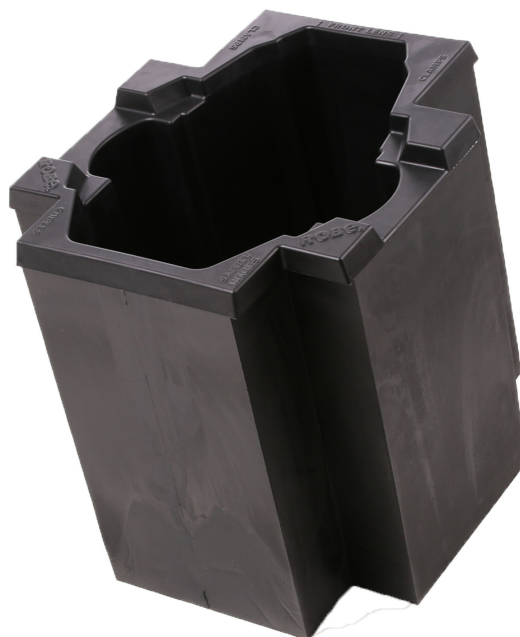


Foam Shell DL7S Profile™

The Foam Shell DL7S Profile™ is produced to satisfy demand on safety transport of the DL7S Profile™. The product is made from polyurethane foam and is characterized by high strength, low weight, quality fabrication and perfect design. Suitable for building into customer cases.



Technical Specification

Exterior dimensions

- 645 x 560 x 610 mm (25.4" x 22" x 24")